



Growing Hope |
Registered charity 1176358

Growing Hope, KXC, 237 Pentonville Road,
London, N1 9NG | 07496 528506
info@growinghope.org.uk

Growing Hope infection control policy

Growing Hope understands the importance of preventing the spread of infection and is aware of the risk of this within a health care setting.

Handwashing

Handwashing is the single most important way to prevent the spread of infection.

Hand decontamination has a dual role to protect both the service user and the health care worker from acquiring micro-organisms (germs) which may cause them harm. Hands may look clean but invisible micro-organisms are always present, some harmful, some not. Removal of micro-organisms is the most important factor in preventing them from being transferred to other people.

Hands should be washed following the twelve step process, as recommended by the World Health Organisation, below (see appendix 1 for diagram):

1. Wet hands with water.
2. Apply enough soap to cover all surfaces.
3. Rub your hands together, palm to palm.
4. Rub the back of each hand with the palm of the opposite hand (i.e the back of the left hand with the right palm and the back of the right hand with the left palm).
5. Again rub palm to palm but this time interlace the fingers of each hand. This will result in the fingers from each hand being between the fingers of the other hand.
6. Rub the backs of your fingers using opposing palms with your fingers locked.
7. Rub around each thumb with the palm of the opposing palm.
8. Finally rub the palm of each hand with the fingers of the opposing hand.
9. Rinse hands thoroughly.
10. Dry with a single use towel.
11. Use the hand towel to turn off the tap.
12. Your hands are safe.

General infection control guidelines:

-Anyone with vomiting and or diarrhoea must not be present within the clinic for 48hrs following the period of sickness.

Providing free therapy for children and young people with additional needs and their families in partnership with local churches across the UK.



Growing Hope |
Registered charity 1176358

Growing Hope, KXC, 237 Pentonville Road,
London, N1 9NG | 07496 528506
info@growinghope.org.uk

- Staff and volunteers should wash their hands before and after seeing each child and family.
- All toys and play mats must be wiped with a clinical disinfectant wipe following a session or assessment.
- Any soft furnishings or fabric equipment must be washed in a washing machine if soiled and if not at least twice a year.
- Once a year a deep clean should be undertaken of all toys and equipment in order to ensure a thorough clean. This should be undertaken using clinical grade disinfectant.
- All uniform must be washed after 48 hours of use. Growing Hope will order dungarees or an appropriate plain top of the therapists choice with the Growing Hope logo embroidered on it. This will be charged to the local charity and should be worn by Growing Hope therapists when working in clinic. This both means that Growing Hope's name is clearly shown and also enables therapists to have practical clothing which they can wash regularly for infection control purposes.

Roles and responsibilities

- Both employees and volunteers are responsible for ensuring a high standard of hygiene in terms of hand washing and disinfecting toys and play mats.
- The local clinic's Lead Therapist and Clinic Manager has responsibility for the clinic running budget and the ordering of new clinical disinfectant wipes, disinfectant soap and other such materials.
- Growing Hope Umbrella organisation has responsibility for ensuring that each lead therapist is aware of this policy and has a copy which they can refer to.
- The lead therapist and clinic manager has a responsibility for organising and ensuring the annual deep clean is carried out.

Blood and bodily fluid

In the event of blood or bodily fluid being spilt this must be cleaned with appropriate cleaning materials and with the member of Growing Hope staff wearing appropriate protective clothing (e.g. gloves). Any cleaning cloths and protective clothing should be disposed of carefully.

Providing free therapy for children and young people with additional needs and their families in partnership with local churches across the UK.



Growing Hope |
Registered charity 1176358

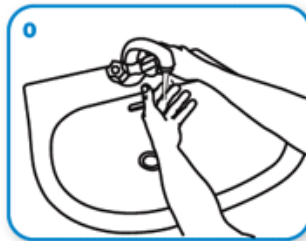
Growing Hope, KXC, 237 Pentonville Road,
London, N1 9NG | 07496 528506
info@growinghope.org.uk

Version: 2

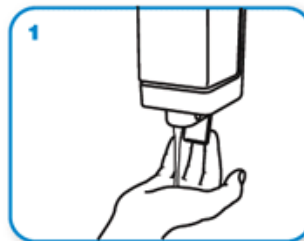
Date adopted: **October 2020**

This policy should be read alongside other Growing Hope policies, including the Coronavirus policy for additional measures due to the pandemic.

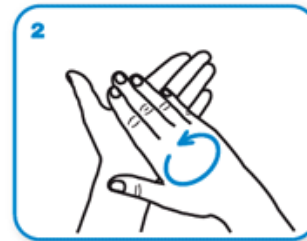
Appendix 1 (copyright World Health Organisation)



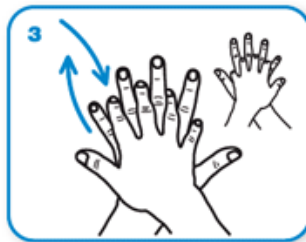
Wet hands with water



apply enough soap to cover all hand surfaces.



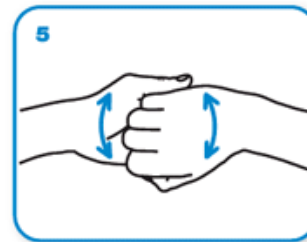
Rub hands palm to palm



right palm over left dorsum with interlaced fingers and vice versa



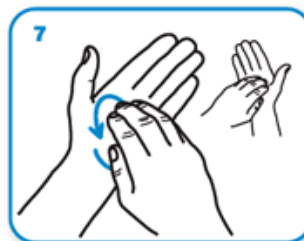
palm to palm with fingers interlaced



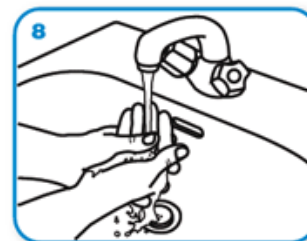
backs of fingers to opposing palms with fingers interlocked



rotational rubbing of left thumb clasped in right palm and vice versa



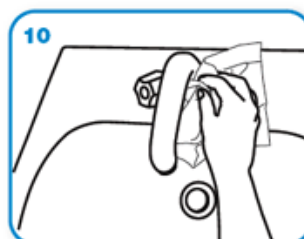
rotational rubbing, backwards and forwards with clasped fingers of right hand in left palm and vice versa.



Rinse hands with water



dry thoroughly with a single use towel



use towel to turn off faucet



...and your hands are safe.